

CERTIFICATE OF LOCATION OF GOVERNMENT CORNER

County of Anoka

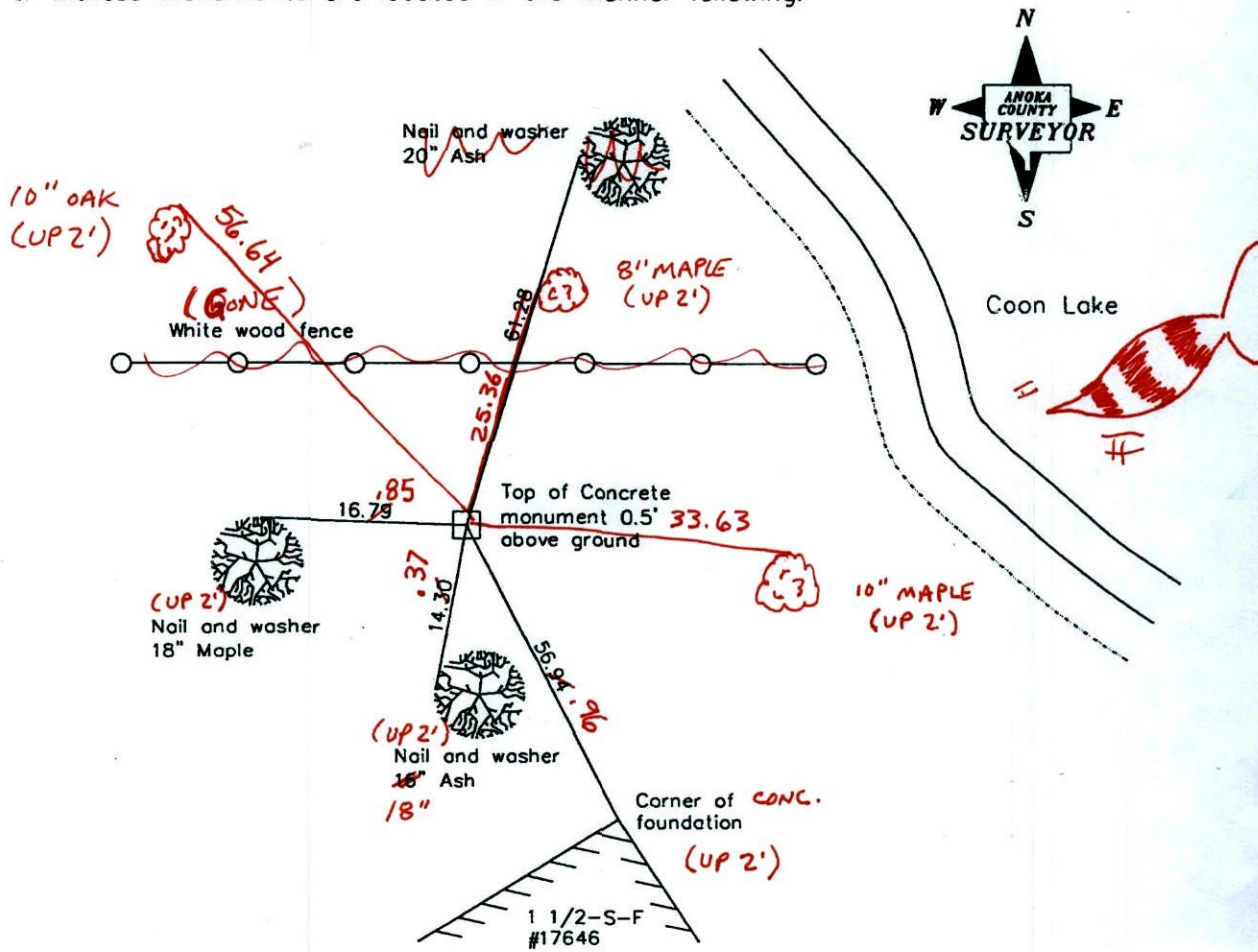
State of Minnesota

Witness Corner of Sec. 3 Township 32 Range 23
 (on East-West quarter line)

I hereby certify that on the 8th day of July, 1964, I found the described corner which was evidenced by a concrete monument

and I further certify that to perpetuate the location of said corner, I did, at the exact location thereof, place a permanent marker consisting of a concrete monument (P.K. IN TOP OF CONCRETE MON. - UP 0.5')

which reference or witness monuments are located in the manner following:



**BK-55
TAPED**

Revised date

| |
|---------------|
| 10/18/91 |
| 8/12/96 |
| 3/05/02 |
| 4-6-11 |

N.A.D. 1983 Coordinates
(1996 adjustment)

| County Project Coordinates | State Plane Coordinates |
|-----------------------------|-------------------------|
| Northing <u>193234.6862</u> | Y _____ |
| Easting <u>520284.4220</u> | X _____ |

Date 3/05/02

CERTIFICATE OF LOCATION OF GOVERNMENT CORNER

County of Anoka

State of Minnesota

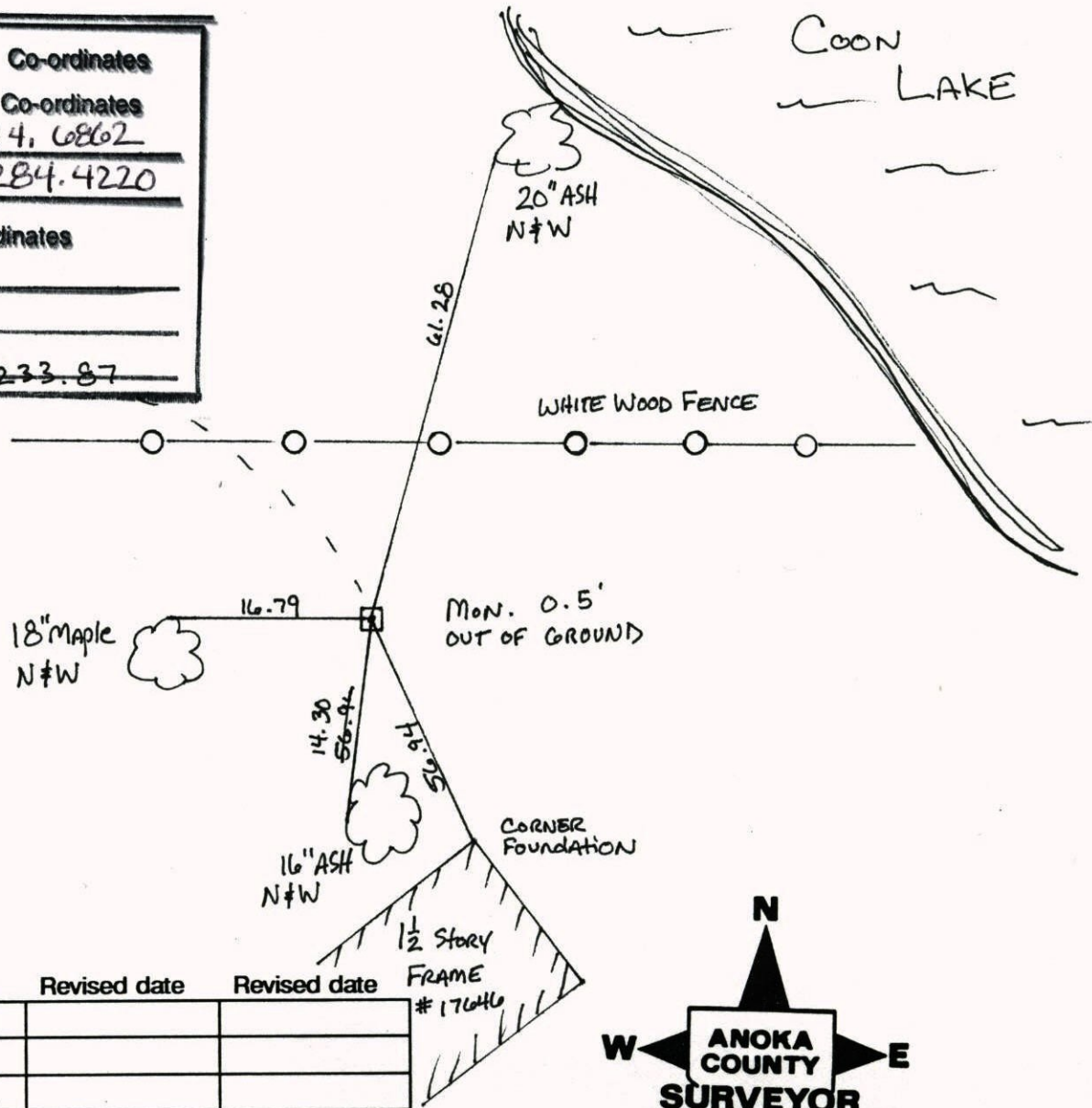
WITNESS
 E-W Qtr LINE Corner of Sec. 3 Township 32 Range 23

I hereby certify that on the 8 day of July, 1964, I found the described corner which was evidenced by Concrete Monument

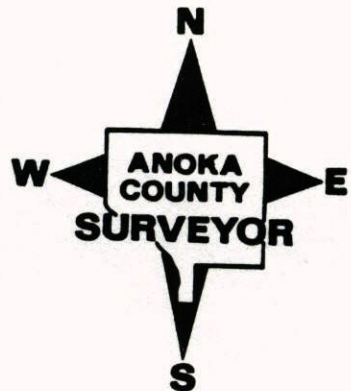
and I further certify that to perpetuate the location of said corner, I did, at the exact location thereof, place a permanent marker consisting of SAME

which reference or witness monuments are located in the manner following:

| | | |
|--------------------------|--------------------|--------------|
| N.A.D. | 1983 | Co-ordinates |
| County | Project | Co-ordinates |
| Northing | <u>193234.6862</u> | |
| Easting | <u>520284.4220</u> | |
| State Plane Co-ordinates | | |
| Y | _____ | |
| X | _____ | |
| Date | <u>2-23-87</u> | |



| Revised date | Revised date | Revised date |
|-----------------|--------------|--------------|
| <u>10-18-91</u> | | |
| <u>8-12-96</u> | | |
| <u>3-5-02</u> | | |
| | | |
| | | |
| | | |
| | | |

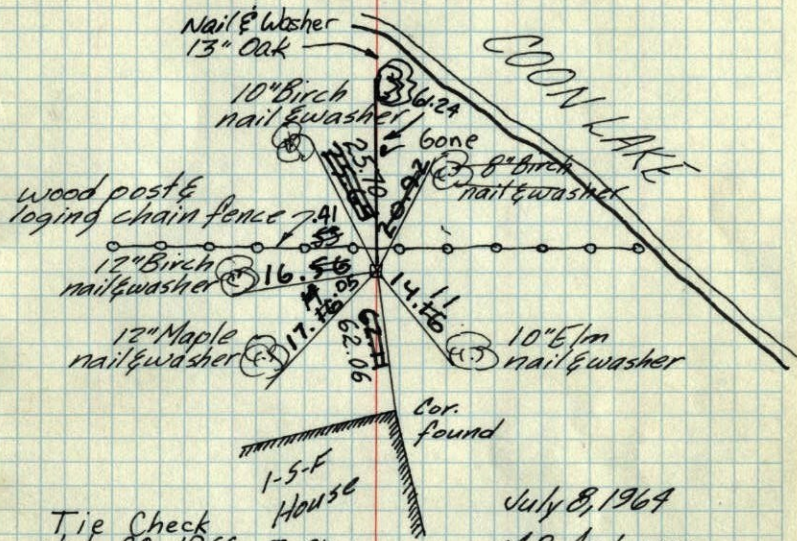


Witness Cor.

16

on E&W. 1/4 line Sec. 3-T32-R23

Conc. Monument up 1'± & 1'± 5 of
E&W fence



Tie Check
July 20, 1966
B. Rogers
J. Berry
R. Smith

Tie Check
May 24, 1971

M.D. Anderson
R. Brien

Tie Check
June 5, 1975
D. Dahl
B. Sannerud
G. Adams

Tie checks
June 6, 1978
D. Dahl
B. Sannerud
M. Kisrow

Tie Check
July 16, 1984
G. Lips
P. Ross
R. Bennett

Tie Check
6-23-81
P. Ross
D. Hornby
G. Deffinger

July 8, 1964

M.D. Anderson
R.M. Carlson

TEMPERATURE CORRECTED
AND HORIZONTALLY
TAPED MEASUREMENTS

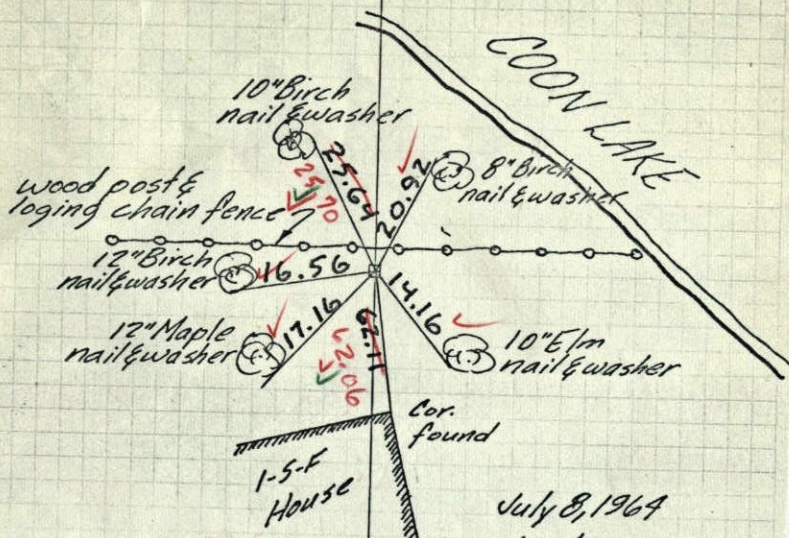
ROLAND W. ANDERSON
COUNTY SURVEYOR
ANOKA COUNTY, MINNESOTA

Witness Cor.

13

on E&W. 1/4 line Sec. 3-T32-R23

Conc. Monument up 1'± & 1'± 5 of
E&W fence



July 8, 1964

M.D. Anderson
R.M. Carlson

TEMPERATURE CORRECTED
AND HORIZONTALLY
TAPED MEASUREMENTS

ROLAND W. ANDERSON
COUNTY SURVEYOR
ANOKA COUNTY, MINNESOTA

Ties checked

7/20/66

B. Rogers

J. Berry

Rick

Lupr (5)

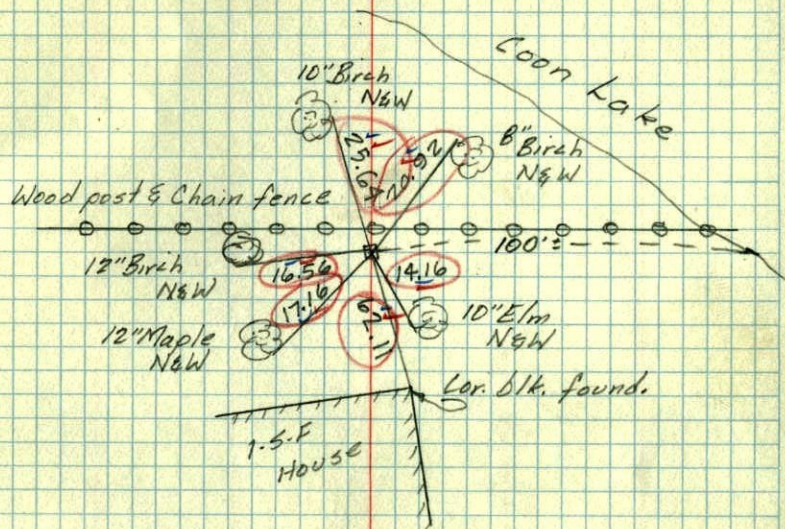
Long (74/6)

Witness Cor.

on E.W 1/4 line Sec. 3-32-23

at Coon Lake

Conc. Mon. up 1' & 1' S. of E&W. fence



July 8, 1964

M. D. Anderson
R. Carlson

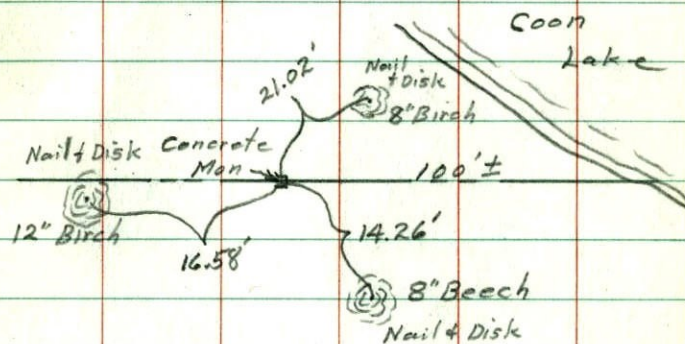
Temp. 75°
Tape #1

Witness Cor.

Meander Corner at

Coon Lake on E & W 1/4 line

Sec. 3-32-23



May 29, 1960

Robert M. Knudsen